

Pool Filter Room Documentation

Below find photos of pool filter-related components located in Longhill Station Pump Room.

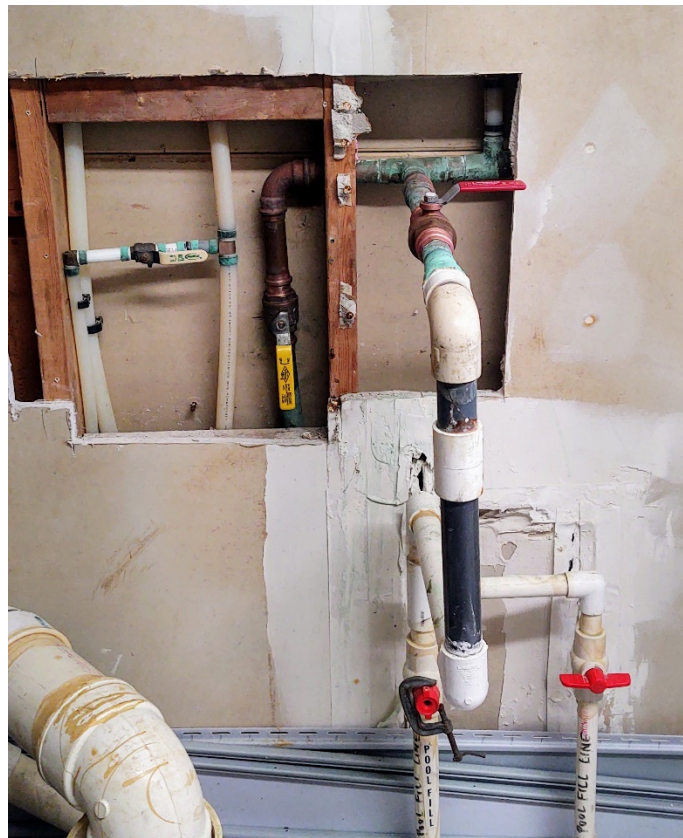
In the photo below note the current positions of all valves that supply water to LHS Pools.

The 3 red valves on the right feed water to the Main Pool and the Baby/(Wading) Pool via the Copper line shown with the Yellow Valve. The yellow valve is normally Open (note the handle is positioned In-Line as shown))

The Red Valve nearby (#1 Main Pool Supply Line and as shown here, is perpendicular to the pipe) is Normally Shut (Top Red valve of the three on right)

2. The 2 Red valves below #1 are also kept Normally Shut – They are Fill Lines to LHS individual pools (Main Pool and Baby Pool) and as shown here, are also perpendicular to their respective white pipes.

In case of emergency inside the filter room Close the Main Water Supply by repositioning the Yellow Valve Handle perpendicular to the pipe. If this does not stop the emergency – Turn of the main Club House Water Supply valve in-ground at the curb.



If it becomes necessary to shut of the power to the Pool Filter Pumps, the switches pictured below are the power source switches for the individual pumps as listed. If not accessible select the Main (4 Top Breakers) in the breaker panel on the back wall when entering the space.



Baby Pool Filter Power Switch – Shown in On Position



Mail Pool Filter Power Switch – Select the appropriate button as needed.



Handle in Line with Pipe
Open



Handle perpendicular to pipe
Closed

Style 1



Style 2

Valve Styles / Open or Closed